

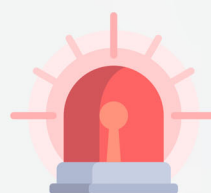
Accuracy: $\pm 0.3^{\circ}\text{C}$

Body Temperature Measurement And Gate Passing

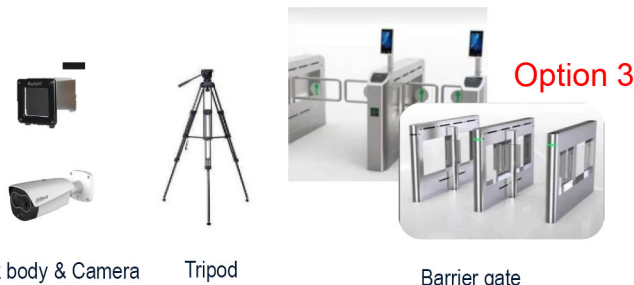
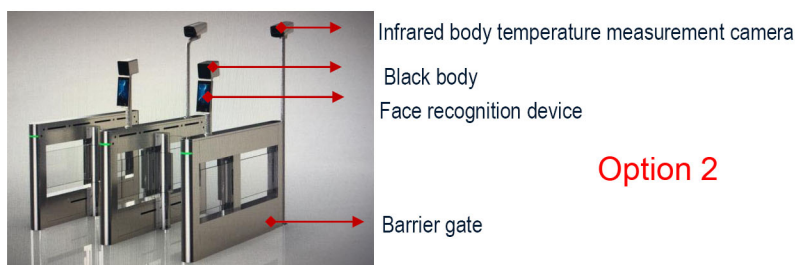
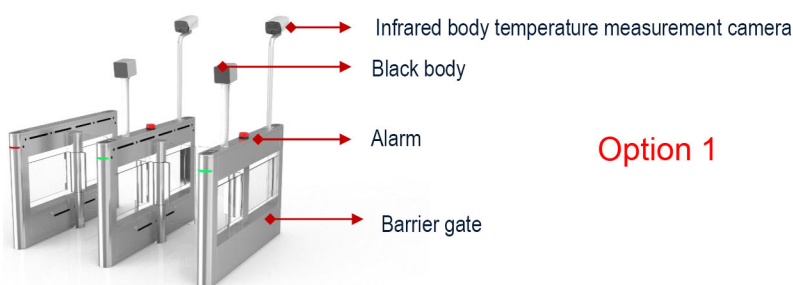
Non-contact | **Accurate detection** | **7 X 24 hours** | **Online monitoring**

System Features

- Human temperature measurement accuracy: 0.3°C to 1°C depending on environment
- Body temperature capturing range: 0.5m to 2m
- Face capacity: 50,000 (Maximum)/support offline recognition
- Face recognition rate > 99%
- High resolution industrial capacitive touch screen
- Dual-color IR cameras
- Camera Sensor: 1 over 2.8" scan CMOS
- Operating temperature range: -25°C to 70°C , humidity $\leq 95\%$ without condensation
- Support multiple authentication: face recognition, QR barcode, card & password, face & ID
- Offers the ability to set 4 groups of face recognition pass-time
- Provides record query option including name, mobile phone number and access time
- Support AD pictures option to be played repeatedly (in a loop)
- Support voice prompt during passage

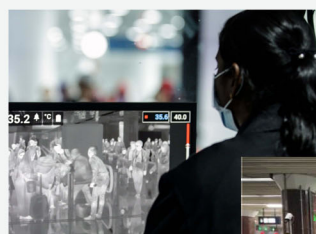


Solutions



System Application

- Airport
- Bus station
- Subway
- Community
- Shopping mall
- Company
- Railway station
- Port terminal
- Hospital
- School
- Super market



Distributed By



Tel : +966112786535
 Mobile : +966544613441
 eMail : it@ebtco.com
 Website : www.ebtco.com